



Long Term Gains

Jay County REMC and Radius deliver high quality electric service to shorten outage time when problems occur.

In keeping with the commitment to offer quality electric service to their members Jay County REMC, in conjunction with Wabash Valley Power Association, installed several G&W Viper reclosers and Schweitzer controls to better respond to line outages and problems as well as maintaining quality electric service. Radius PDR 221 radios communicates data from these devices from the far regions of the service area back to the Jay County REMC office in Portland, Indiana

HISTORY OF JAY COUNTY

Jay County REMC is located in Portland IN and was incorporated in 1936. Its founders were local people who worked to set poles, build distribution lines and bring electricity to rural customers who investor owned utilities were not interested in serving. As a cooperative organization, every customer is a member. The electricity provided by these early members was instrumental in helping farm life into the modern age. Today Jay County REMC serves more than 5,260 members in Jay and parts of Adams, Blackford, Delaware, Randolph and Wells counties in Indiana with nearly 1,154 miles of energized lines.

CASE IN QUESTION

Radius were requested to provide their PDR 221 data radios for the monitoring of line activity within

the Jay County REMC network due to many factors. The first of which was the reliability of the data transmitted and received from and to the PDR. This is due to some of the advanced functions on the radio. One such advancement is its Forward Error Corrections facility, which is built into all PDR data radios. The technology from Radius allows signals to be transmitted and received in even the harshest of environments due to the way the radios interpret data from one site to the other. Meaning that Jay County's network is always monitored.

CRITICAL DATA

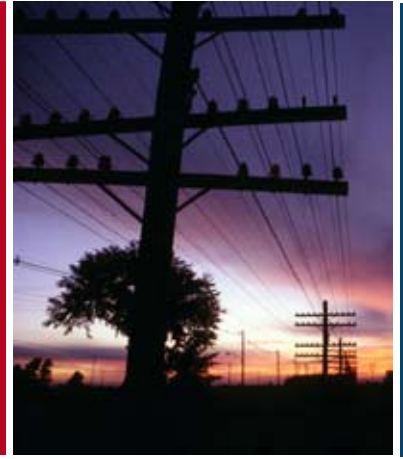
The critical data provided by the PDR 221 allows line crews to communicate with the sites and determine what type of fault has occurred and where. This data directs the line crews to the exact location of the problem and expedites repair and resumption of electricity to all members. In addition to critical data communications when a problem occurs, Jay County REMC also monitors the devices on a regular basis to determine the quality of the electricity provided.

"One such advancement is its Forward Error Correction facility, which is build into all PDR data radios"



PRODUCT PRAISE

Jeff Myers from Jay County REMC states "the system works perfectly. The Radius PDR 221 radios allow us to communicate with the reclosers and determine the exact location of a fault. This allows to respond quicker and to send the proper crews for a particular problem. Saving us time and allowing us to get our customers back on line faster."



AVOIDING COLLISIONS

One other advancement from the PDR 221 data radio is its Forward Error Correction, which enhances the signal quality of the radio transmission so even in areas where radio interference are high, such as in urban areas, or where natural radio interference occurs the signal still reaches its designated radio without any interruption in the data stream. Giving Jay County REMC every transmitted bit regardless of where the radios are fitted.

FREQUENCY CHOICE

Another factor in the PDR 221 data radio being chosen for the project was the cost saving which the radios deliver. Because they can be fitted with either UHF or VHF radios, this makes the PDR a very versatile unit. This means there are no overhead costs after the initial purchase of the radios, as their frequencies can be fitted within either licensed or unlicensed frequencies, which help to reduce the cost of monitoring networks for all utility organizations.

"The Radius PDR 221 radios allow us to communicate with the reclosers and determine the exact location of a fault."

SOMETHING EXTRA

Radius has also thought about what type of functionality should go into its PDR data radios. With this in mind, Radius added the ability to communicate through peer-to-peer, point-to-point or point-to-multipoint communication methods.

Along with this the radios are also configured to take all the major protocols on the market today from DNP3, IEC870, Exoline and many more, and with all PDR data radios the customer is able to configure their own systems using the standard Windows terminal interface.

"the radios are also configured to take all the major protocols on the market today from DNP3, IEC870, Exoline and many more,"

In cooperation with:

Jay County REMC
484 S 200 W
Portland
IN 47371
USA
Tel +1 (260) 726-7121
www.jayremc.com

Do you want to know more about
Radius? Please contact us:

www.radius.net

 **RADIUS**